



Features :

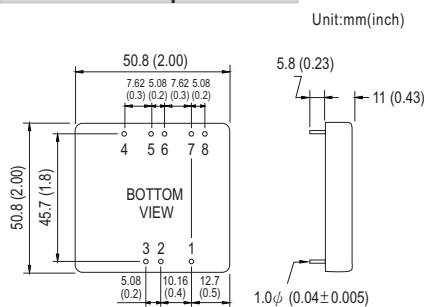
- 2:1 wide input range
- High efficiency up to 92%
- 1500VDC I/O isolation
- Built-in EMI filter
- Built-in remote ON / OFF control
- Built-in remote sense
- Trimming output $\pm 10\%$
- Protections: Short circuit / Overload / Over voltage
- Cooling by free air convection
- Six-sided shield metal case
- 100% burn-in test
- Low cost / High reliability
- Output 3.3V/9V available
- Approvals: FCC / CE
- 2 years warranty



SPECIFICATION

ORDER NO.	SKA40A-05	SKA40B-05	SKA40C-05	SKA40A-12	SKA40B-12	SKA40C-12	SKA40A-15	SKA40B-15	SKA40C-15
OUTPUT	DC VOLTAGE	5V			12V			15V	
	CURRENT RANGE	0.7 ~ 7A			0.3 ~ 3.33A			0.26 ~ 2.67A	
	RATED POWER	35W			40W			40W	
	RIPPLE & NOISE (max.) Note.2	60mVp-p			80mVp-p			100mVp-p	
	LINE REGULATION Note.3	$\pm 0.5\%$							
	LOAD REGULATION Note.4	$\pm 0.5\%$							
	VOLTAGE ACCURACY	$\pm 2.0\%$							
	SWITCHING FREQUENCY	200KHz min.							
	EXTERNAL CAPACITANCE LOAD (max.)	1000uF							
INPUT	EXTERNAL TRIM Adj. RANGE(Typ.)	$\pm 10\%$							
	VOLTAGE RANGE	A: 9 ~ 18VDC B: 18 ~ 36VDC C: 36 ~ 75VDC							
	EFFICIENCY (Typ.)	91%	92%	91%	90%	90%	88.5%	90%	90.5%
	DC CURRENT	Full load A: 3850mA B: 1900mA C: 1000mA							
		No load A: 150mA B: 100mA C: 65mA							
	FILTER	Pi network							
	REMOTE CONTROL	Power ON : R.C ~ -Vin > 2.5VDC or open circuit ; Power OFF : R.C ~ -Vin < 0.5VDC or short							
	PROTECTION	Fuse recommended							
	OVER CURRENT	110% ~ 180% rated output power							
PROTECTION (Note. 5)		Protection type : Hiccup mode, recovers automatically after fault condition is removed							
	SHORT CIRCUIT	All output equipped with short circuit							
		Protection type : Hiccup mode, recovers automatically after fault condition is removed							
	OVER VOLTAGE	5Vo : 7V ~ 8.95V ; 12Vo : 15V ~ 19.2V ; 15Vo : 18V ~ 23.3V						Protection type : Clamp by TVS diode	
ENVIRONMENT	WORKING TEMP.	-40 ~ +80°C (Refer to "Derating Curve")							
	WORKING HUMIDITY	20% ~ 90% RH non-condensing							
	STORAGE TEMP., HUMIDITY	-55 ~ +105°C, 10 ~ 95% RH							
	TEMP. COEFFICIENT	$\pm 0.03\% / ^\circ\text{C}$ (0 ~ 50°C)							
	VIBRATION	10 ~ 500Hz, 2G 10min./1cycle, period for 60min. each along X, Y, Z axes							
SAFETY & EMC	WITHSTAND VOLTAGE	I/P-O/P: 1.5KVDC							
	ISOLATION RESISTANCE	I/P-O/P: 100M Ohms / 500VDC / 25°C / 70% RH							
	EMC EMISSION	Compliance to EN55032 Class A, FCC part 15 Class A							
	EMC IMMUNITY	Compliance to EN61000-4-2, 3, 4, 5, 6, 8, light industry level, criteria A							
OTHERS	DIMENSION	50.8*50.8*11.0 mm or 2**2**0.43" inch (L*W*H)							
	WEIGHT	60g							

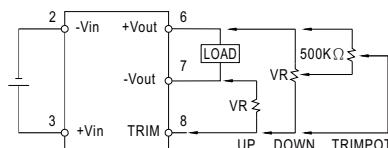
Mechanical Specification



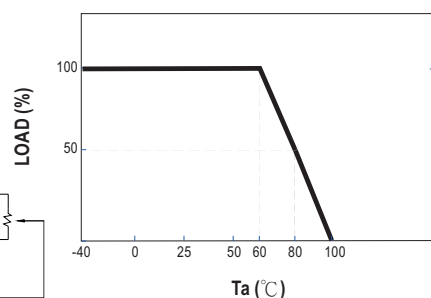
Pin Configuration

Pin No.	Output	Pin No.	Output
1	R.C	5	+R.S
2	-Vin	6	+Vout
3	+Vin	7	-Vout
4	-R.S	8	TRIM

External Output Trimming



Derating Curve



NOTE

1. All parameters are specified at normal input, rated load, 25°C 70% RH ambient.
2. Ripple & noise are measured at 20MHz by using a 12" twisted pair terminated with a 0.1uF & 47uF capacitor.
3. Line regulation is measured from low line to high line at rated load.
4. Load regulation is measured from 10% to 100% rated load.
5. Please prevent the converter from operating in overload or short circuit condition for more than 30 seconds.